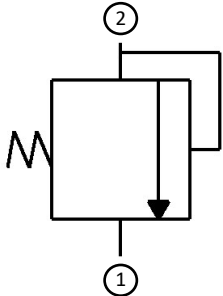


HRV- HP Inline Pressure Relief Valve Hydraulic

Functional Symbol:



Description:

Hydraulic Inline Pressure Relief Valve are an easy way to protect any hydraulic system from pressure spikes. Easy to install and durable for a long life.



HRVF- Inline Pressure Relief Valve, female/ female design shown

Operation:

HRV-HRVF- HRVM High Pressure direct-acting relief valves are normally closed, pressure-limiting valves used to protect hydraulic systems from pressure spikes. When the pressure at the inlet reaches the pressure setting, the valve starts to open, throttling flow to limit the pressure rise. These valves are smooth and quiet, low leak, dirt tolerant, immune to silting and are very fast.

Features:

- Factory set to your requested pressure relief up to 3000 psi (207 bar)
- Inline valve will operate when mounted in any position in your hydraulic system.
- Standard material is zinc plated steel or optional 316 stainless steel.
- All in line valves are made in the U.S.A.

Ratings:

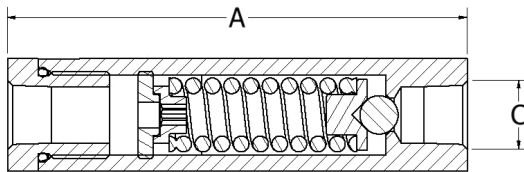
Max Operating Pressure: 6,000 psi (413.7 bar)

Proof Pressure: 9,000 psi (620.5 bar)

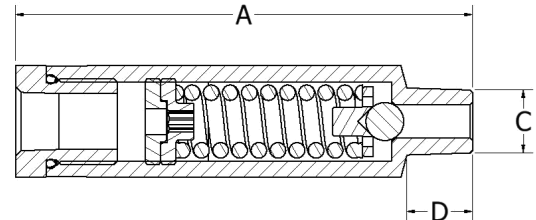
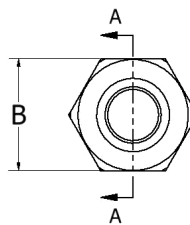
Max Crack Pressure: 3,000 psi (207 bar)

Operating Temperature: -40 to 100° C (-40 to 212° F) with Buna N seals. (Other seal materials available by request)

Technical:



HRVF – Inline Pressure Relief Valve F-F



HRV- Inline Pressure Relief Valve M-F

"A" Length Inch, (MM)	"B" Hex Size Inch, (MM)	"C" Threads	"D" Length Inch, (MM)	"E" Weight Ounces, (kg)
5.63, (143.0)	1.375 (35.0)	08- SAE #8	.44 (11.2)	29.6 (.84)
5.63, (143.0)	1.375 (35.0)	25- 1/4"-18 NPT	.75 (19.1)	29.6 (.84)
5.63, (143.0)	1.375 (35.0)	38- 3/8"-18 NPT	.75 (19.1)	29.6 (.84)
5.63, (143.0)	1.375 (35.0)	40- 3/8" -18 NPT Male to 1/2"- 14 NPT Female	.75 (19.1)	29.6 (.84)
5.63, (143.0)	1.375 (35.0)	50- 1/2" -14 NPT	.81 (20.6)	29.6 (.84)
5.63, (143.0)	1.375 (35.0)	84- SAE #8 Male, 1/2"-14 NPT Female	.81 (20.6)	29.6 (.84)

HRV- HP Inline Pressure Relief Valve Hydraulic

Ordering Information:

HRV -
 08 -
 1250 -

Model Number		"C" Threads	Set Pressure*		Material	
HRV	HP Inline Pressure Relief Valve (M-F)	08 #8 SAE	2500	2500 psi (173 bar)	Blank	Zinc Plated Steel
		25 1/4"-18 NPT	2750	2750 psi (190 bar)		
		38 3/8"-18 NPT	3000	3000 psi (207 bar)		
		40 3/8" NPT (M) to 1/2" NPT (F) (HRV Only)	3250	3250 psi (224 bar)		
HRVF	HP Inline Pressure Relief Valve (F-F)	3500 3500 psi (242 bar)	3500	3500 psi (242 bar)		
		50 1/2"-14 NPT	3750	3750 psi (259 bar)		
		84 #8 SAE - 1/2"-14 NPT (HRV Only)	4000	4000 psi (276 bar)		
HRVM	HP Inline Pressure Relief Valve (M-M)	4250 4250 psi (293 bar)	4250	4250 psi (293 bar)		
		25	4500	4500 psi (311 bar)		

* Custom set pressure also available